

It's time to chart
the uncharted territories
of Coronary Artery Disease



Gain Unparalleled Insights into Heart Disease

with the Makoto™ Intravascular Imaging System

There are still broad swaths of uncharted territories concerning the role lipid core plaques play in heart disease. Now, you can achieve unparalleled insights with the Dualpro™ IVUS+NIRS catheter and its accompanying Makoto™ Intravascular Imaging System, the only dual-modality catheter and imaging system indicated for the detection of lipid core plaque (LCP).

By analyzing both structural and compositional data you can learn about the effects of specific treatments on plaque size and lipid core content, develop novel preventative approaches for plaque stabilization, study regression of plaque size and composition, or guide the use of existing therapies.

Anything else and you are leaving valuable data on the table.

Technology that makes you look twice at heart disease.

Proprietary Chemogram

for easy-to-interpret detection of the presence of lipid core

Lipid Core Burden Index (LCBI)

for quantification of lipid core in the scanned region

Simultaneous co-registered acquisition of IVUS and NIRS

quick, easy and comprehensive analysis



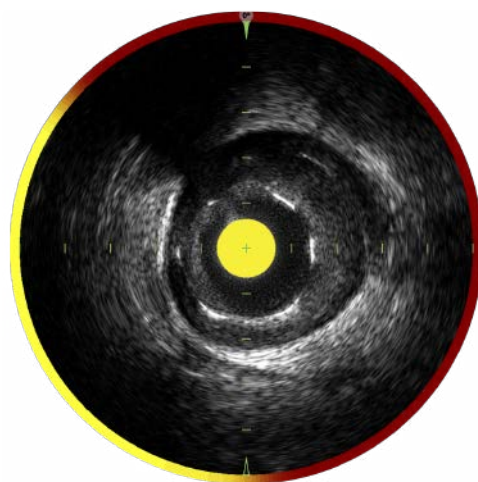
See Vessel Structure & Plaque Composition

with the Dualpro™ IVUS+NIRS

Dualpro is the only intravascular imaging catheter on the market today utilizing IVUS and NIRS technology to give you the promise and power of intelligent insights. Our simultaneous co-registered acquisition of IVUS and NIRS data was engineered for a quick, easy and comprehensive analysis of both vessel structure and plaque composition.

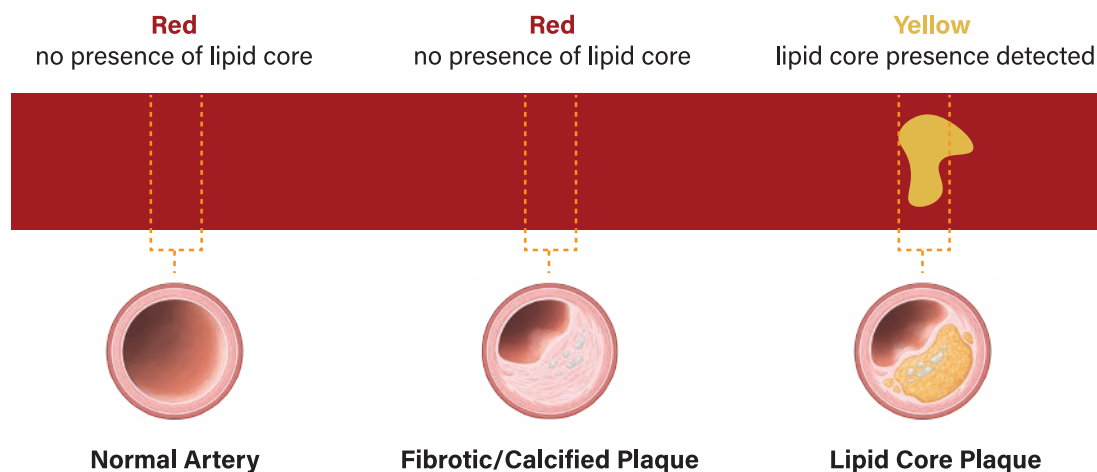
See a Crisper Image of Vessel Structure with Dualpro IVUS extended bandwidth technology

By emitting and carefully processing a broad band of frequencies, the Dualpro IVUS brings you best-in-class image resolution without compromising depth of field. A crisper IVUS image of the vessel structure can help you identify the degree of stenosis, visualize and quantify plaque burden, determine the best landing zone for a stent, and assure proper stent deployment.



Reveal the Value of Plaque Composition with Dualpro NIRS proprietary chemogram

With the power of our unique Near-Infrared Spectroscopy (NIRS) technology and proprietary chemogram, you can gain insights into a plaque's composition and can readily distinguish between stable plaque and dangerous lipid core plaque (LCP)- a well-documented culprit in heart disease associated with 95% of STEMIIs and an increased risk of peri-procedural complications.^{1,2}

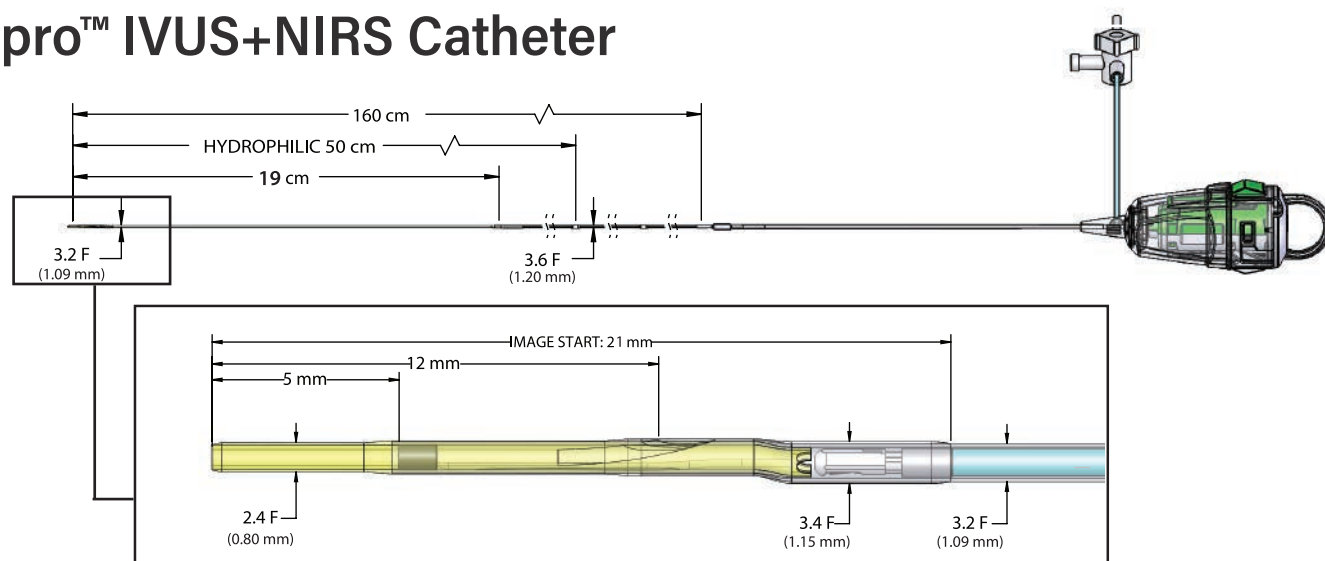


Makoto™ Intravascular Imaging System

Product name	Makoto™ Intravascular Imaging System	Ultrasonic scanning method	rotational hub
Catalog number	TVC-MC10	Infrared wavelength	1180~1260nm
Monitor	Physician Monitor 21.5" Full HD Technician Monitor 15.6" Full HD 1920x1080p	Pull back function	Pullback Speed: 0.5, 1.0, 2.0 mm/s, 1800rpm LiveIVUS Speeds: 0.0, 2.0, 10.0mm/s, bi-directional, 960rpm
Body size	61 x 150 x 71 cm	HDD	500 GB (Approximately 1,000 scans)
Body weight	92 kg	External storage method	PACS, USB, DVD-Rm CD-R, Local Hard Drive
Power supply	AC 100 V 50/60 Hz	Save form	DICOM, AVI, PDF, TVC Native Format
Operating environment condition	room temperature 15° to 32°C humidity 20% to 80% (non-condensing)	External output terminal	PACS, USB 3.0 (x2), Blu-ray/DVD, Bluetooth printing 1600x1200p optional output

Regulatory approval number:

Dualpro™ IVUS+NIRS Catheter



Catalog number	Diameter of catheter			IVUS Frequency	Effective Length	Optimal guiding catheter minimum lumen diameter	Optimum guide wire size
	Entry Profile	Crossing Profile	Proximal Shaft				
TVC-C195-42	1.80mm (2.4F)	1.09mm (3.2F)	1.20mm (3.6F)	35-65MHz	1600mm	1.70mm (0.067in)	0.36mm (0.014 in)

SELLING AGENCY



Tel 052 (269) 5300 FAX 052 (262) 8694

[HTTP://WWW.GOODMANKK.COM](http://www.goodmankk.com)

MANUFACTURER AND DISTRIBUTOR



[WWW.INFRAREDX.COM](http://www.infraredx.com)

Customer Service. 1 800 596 3104

FAX 781 272 5290

REFERENCES

1. Detection by NIRS of LCPs at Culprit Sites in Patients with Acute STEMI, Madder et al, *JACC Cardiovasc Interv.* 2013
2. Detection of LCPs by intracoronary NIRS Identifies High Risk of Periprocedural MI, Goldstein et al, *Circ Cardiovasc Interv.* 2011